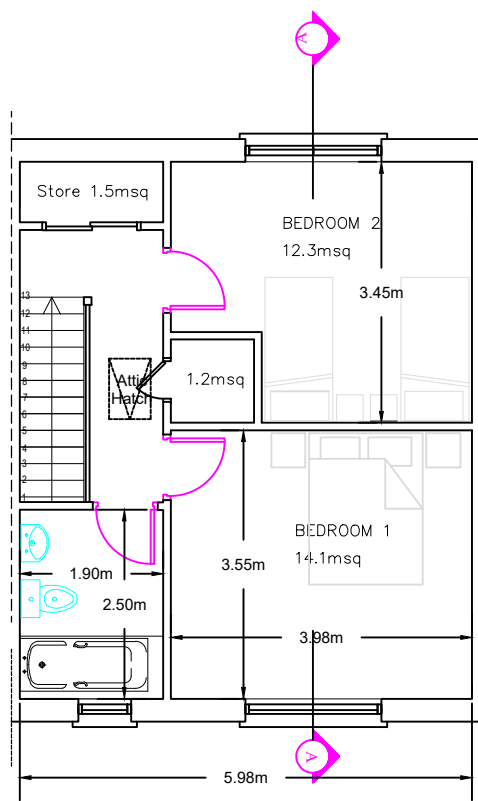
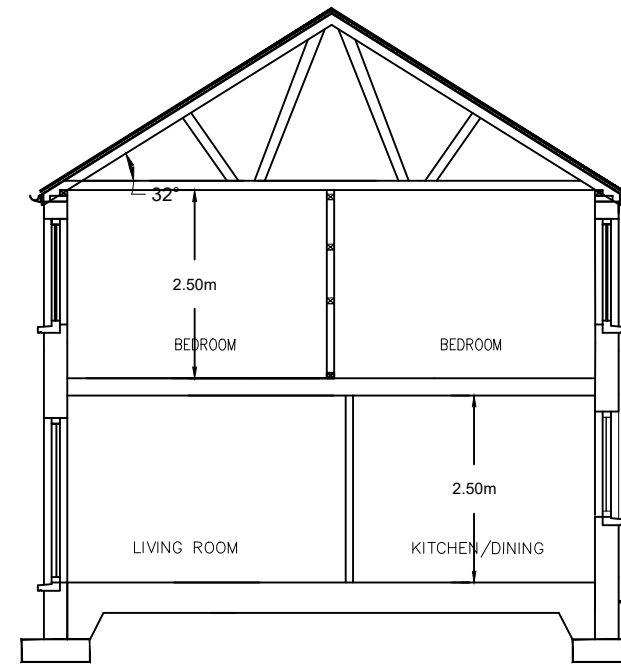


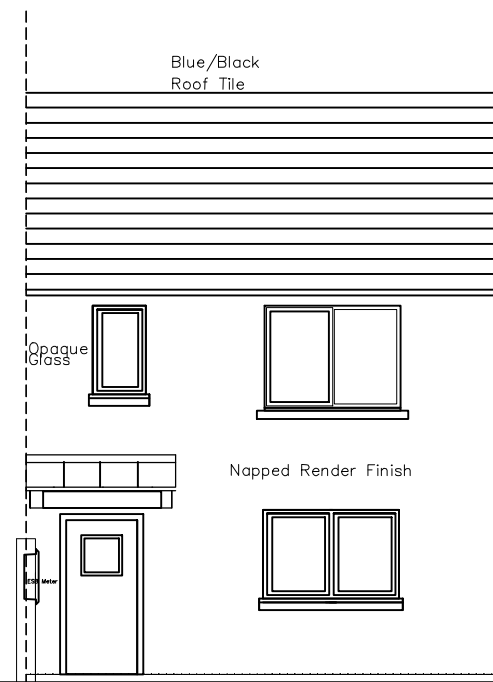
GROUND FLOOR PLAN (House Type B Terrace Unit)



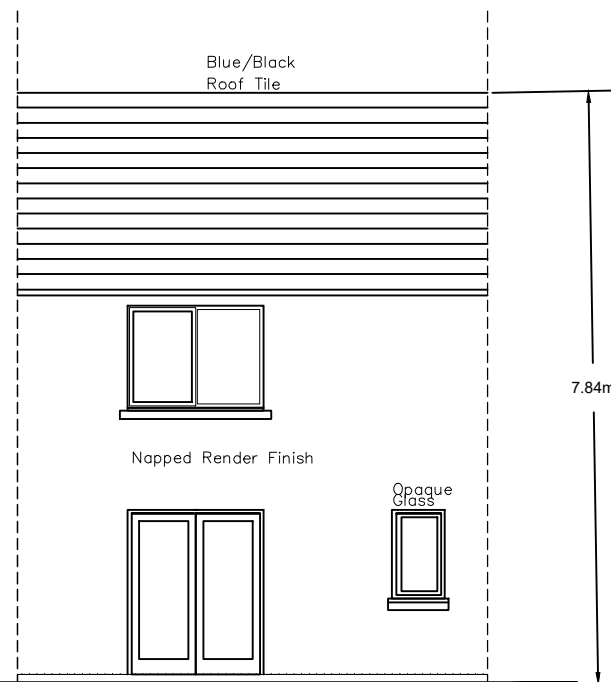
FIRST FLOOR PLAN (House Type B Terrace Unit)



SECTION A-A




FRONT ELEVATION (House Type B Terrace Unit)



REAR ELEVATION (House Type B Terrace Unit)

- 2 Bed 4P House Total area - 81msq (80)
- Living - 14.7msq (13)
 - Kitchen - 14.0msq
 - Bedroom 1 - 14.1msq (13)
 - Bedroom 2 - 12.3msq (11.4)
 - Storage - 4.1msq (4)

REV:	DATE:	DRN BY:	DESCRIPTION
REVISIONS:			
 WICKLOW COUNTY COUNCIL			
HOUSING CONSTRUCTION		TEL:0404 - 20100	
COUNTY BUILDINGS		FAX 0404 - 67792	
WICKLOW		E-MAIL cosec@wicklowcoco.ie www.wicklow.ie	
JOB: Proposed Housing Units			
At Upper Dargle Road			
Bray			
TITLE: Plans, Elevations & Section			
(Unit Type B)			
SCALE:	1:100 @A3	Date:	Aug 22
DWG NO:	UDRB/P8/101	Drawn:	EM
SHEET SIZE:	A3	Checked:	
STATUS:	PART 8		REV: